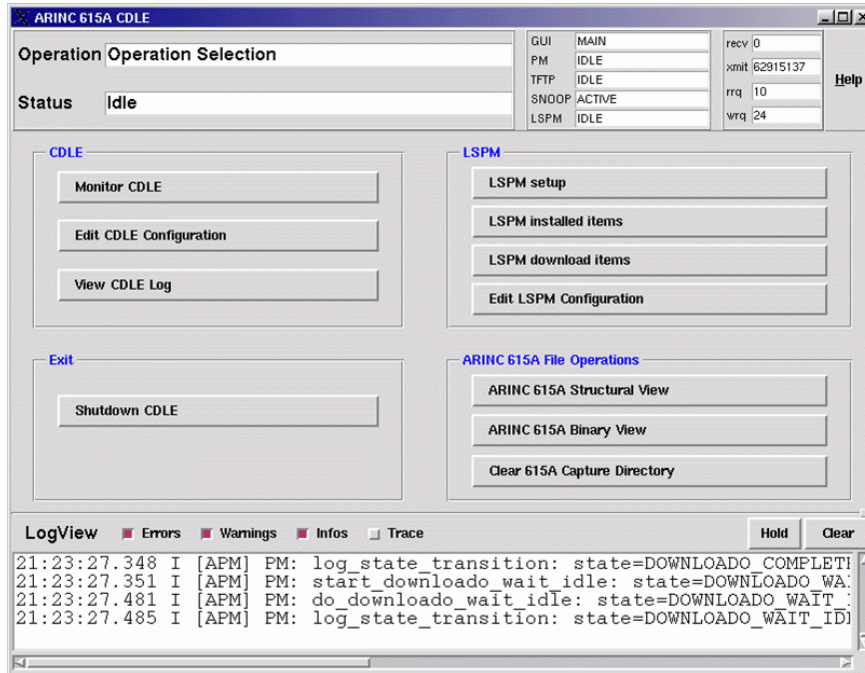




CDLE™ ARINC 665/615A Configurable Data Loading Engine



- ARINC 615A compliant services
- Multithreaded TFTP engine
- Static configuration via command line parameters and configuration files
- Dynamic configuration via LSAP Manager SETUP call
- Small memory footprint
- CDLE™ Manager GUI for development and testing





mastering
integration
complexity

CDLE™ ARINC 665/615A Configurable Data Loading Engine

Application Scope

The **ARINC 665/615A Configurable Data Loading Engine** (CDLE™) is a fully configurable 615A data loading engine plug-in. The CDLE™ supports full ARINC 615A -1/-2 compliant data loading of Loadable Software Aircraft Parts (LSAP) for data loading of avionics LRU/LRMs via Ethernet according to the ARINC 615A standard. It provides a development tool and code source for integration of a 615A data loading capability into an existing or new LRU/LRM design.

Feature Highlights

- > ARINC 615A compliant services
- > Multithreaded TFTP engine
- > Static configuration via command line parameters and configuration files
- > Dynamic configuration via LSAP Manager SETUP call
- > Small memory footprint
- > CDLE™ Manager GUI for development and testing

Session Log and Event Log

All transactions including login are logged to a session log file at a highly detailed level.

Additionally, all protocol level events are logged into an event log file, again at a highly detailed level.

For each session a new session log file and a new event log file are created. All stored session and event log files can be inspected in a viewer window. The content of the current session log is always visible to the user.

LSAP Manager Interface

The CDLE™ LSAP Manager interface is a simple and scalable interface to a user-provided LRU-specific Parts Manager. It offers all functionality for supporting ARINC 615A requests.

The LSAP Manager runs as external application allowing updates of the LSAP Manager without affecting CDLE™ and vice versa.

- > SETUP command: provide system information for CDLE™ at startup with parameters such as IP address, THW_ID, etc.

- > INFO command: report installed LSAP Parts
- > INSTALL command: install software part on LRU, provides means for configuring CDLE™ installation mode
- > DOWNLOAD command: query and locate downloadable items
- > Allows LSAP Manager to be written without ARINC 615A/665 parsing capabilities
- > ABORT/CANCEL signal: allow the LSAP Manager to stop current command in case of ABORT/CANCEL from CDLE™ or from the host data loader
- > Cyclic heartbeats: provide the CDLE™ and host data loader with feedback on status of LSAP Manager operation

Media Installation Development Engine Plug-in

Also available from TechSAT is an ARINC 655 media installation engine plug-in for unpacking and installation of ARINC 665 files. ARINC 665 compliant media sets delivered from the CDLE™ are unpacked to a distributable structure and placed in locations where stub functions can access them for parts installation.

Technical Data

Software Options

- A665 MediaCreator fully compliant with ARINC 665-1/2 specifications (PN 202054)
- A665-3 MediaCreator fully compliant with ARINC 665-3 specifications (PN 202126)

Operating System Options

- Windows 10
- Linux

Part Number

- 202018